



Flatirons Ski Club

April, 2010

An Outdoor Multi Sports & Social Group
www.FlatironsSkiClub.com

General Meeting and Officer Election

Thursday, April 1, 2010

7:00 PM Social; 7:30 PM Business

Best Western Boulder Inn-Frontage Road (770 28th St)

Stew Woodward will delight us with a slideshow from the multitude of previous trips he has led for the club. This is a "can't miss" program!



Spring Fling

Mark your calendar for the SPRING FLING, June 5th, Foothills Community Park, 12:00 - 2:00 pm. Please bring a side dish or dessert. Club will supply burgers, buns, condiments, and some soft drinks. BYOB. Volunteers needed to flip burgers, set-up (11:00), clean up, or just be available to help where needed. Please sign up at the April or May meeting or email Brenda at brenda1231@comcast.net.





President's Message

Time and tide wait for no man, and we are on the cusp of a new season already. We have made more memories on the slopes and got to enjoy our fellow members on a variety of weekend trips. We owe a debt of thanks to the volunteer trip leaders as it takes a lot of planning and effort to package these trips and make these fun weekends possible. Many of you have enjoyed Thursday ski outings and thank you to Ed Hansen for doing such a good job of coordination. We have several summer excursions already being organized so do look at the announcements as several of these sell out very quickly. The traditional Tuesday hikes and pot lucks will be returning in May and I will look forward to seeing the summer faces once more.

At the April general meeting we will be asking the members to elect the new board to take over at April 30th. I am happy to report that the following current board members have accepted nominations to continue in the following year – Elease Miller, Jan Effenberger, Peggy Robbins, Linda Paris, Irma Hille, Arnie Mullen, Stewart Woodward, Dorothy Coltrin, Brenda Hutchinson, Linda Giandinotto and Kathy Joyce. June Saunders is retiring as Vice President and Claudia Vanwie has accepted the nomination for this position. June has agreed to assist the Social chair and I know will add some interesting new ideas for outings in the future.

My best wishes to you all for a joyous Spring!

Elease

Board Members and Support Staff

| | | |
|--------------|-------------------|--|
| President | Elease Miller | 303-530-4376 eleasem@comcast.net |
| Vice Pres. | June Saunders | 303-494-6273 tjsaunders@comcast.net |
| Secretary | Jan Effenberger | 303-499-8432 jeberger@comcast.net |
| Treasurer | Peggy Robbins | 303-442-6377 pl_robbins@hotmail.com |
| Publicity | Linda Paris | 303-530-2423 alohaoldpali@msn.com |
| Downhill | Irma Hille | 303-442-1132 hillei@spot.colorado.edu |
| X-Country | Arnie Mullen | 303-859-2549 arniemullen@netscape.net |
| Activities | Stew Woodward | 303-665-9438 StewSherpa@aol.com |
| Social Chair | Dorothy Coltrin | 720-304-2932 dmcoltrin@comcast.net |
| Social Chair | Brenda Hutchinson | 303-527-0380 brenda1231@comcast.net |
| Membership | Linda Giandinoto | 303-499-1647 lindag46@comcast.net |
| Webmaster | Roger Briden | 303-402-0682 rcbriden@earthlink.net |
| Newsletter | Kathy Joyce | 303-322-8517 knarvaez@idcomm.com |
| Mailing | Larry Rittenhouse | 303-530-2444 |

**Board Meeting:
Thursday, April 15
Potluck 6:30– Business 7:15
@ Jan Effenberger's
4215 Apache Road**

Flatiron Ski Club Book Club

New Members Welcome

Tuesday April 13th 7:00 PM

At her home, Jan Effenberger will lead out discussion of *The Help: a Novel* by Kathryn Stockett.

The Help -- Southern whites' guilt for not expressing gratitude to the black maids who raised them threatens to become a familiar refrain. But don't tell Kathryn Stockett because her first novel is a nuanced variation on the theme that strikes every note with authenticity. In a page-turner that brings new resonance to the moral issues involved, she spins a story of social awakening as seen from both sides of the American racial divide. This book is longer than most we read but worth it, so start early.

Contact Roger with questions
RogerPovilus@yahoo.com

Wednesday May 12. Storms of My Grandchildren: The Truth About the Coming Climate Catastrophe and Our Last Chance to Save Humanity

by James Hansen

Bridge: Everyone is invited to play bridge on the 2nd and 4th Thursdays every month

**Thursday, Apr.8:- Terje Vangbo, host 303-883-4168
location: Jan Effenberger's home**

**Thursday, Apr.22: Laurance Hubbard, host,
303-447-2380**

To make sure we have full tables, call ahead of time. We would like each player to make a contribution of \$2.00 to offset the expense of hosting.



Thursday Midweek Ski Schedule 2010

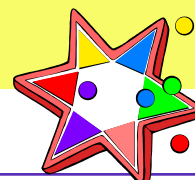
Please call Ed Hanson (Home: 303-993-4445 / Cell: 303-902-3709) by Wednesday to confirm your participation each week. We will meet in the Eldorado Springs Park-n-Ride (northeast corner of Highway 93 and Marshall Road) as we did last year. We will arrange cars and drivers the night before and leave promptly at 7:30 am. This schedule reflects preferences shown in the signup sheet. However, these locations are subject to change based on snow conditions and weather. A different ski area may be chosen if the entire group agrees. Each driver will top off their gas tank in Golden and, upon return to Golden; they will refill their gas tank. The cost will be divided among the passengers, including the driver, and remitted to the driver.



| | | | |
|----------------|--------------|----------------|----------------|
| March 25, 2010 | Breckenridge | April 1, 2010 | Copper |
| April 8, 2010 | Keystone | April 15, 2010 | Winter Park/MJ |

Game Night, Saturday, April 24th, 6 pm at Muriel Briggs, 1440 Sierra Drive, Boulder 80302
Call 303 443 9375. Bring appetizer or dessert to share, a drink (for self), a favorite board/card game (optional).

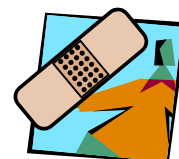
Directions: Baseline to 15th Street, go South on 15th, Continue up 15th and follow first curve around Bellview Drive. Look for Sierra on left and turn left.



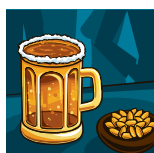
Wilderness First Aid

The Boulder Parks & Recreation Dept. is giving a 2 day course, "Wilderness First Aid," on **Saturday & Sunday, May 8 and 9, from**

8 a.m. to 4 p.m. at the South Boulder Rec. Center. It is a basic 16 hour class for hikers, boaters, and others. The class max is 15, so you need to sign up ASAP. The fee for Boulder residents is \$128, for non-residents, \$160. For info, call (303).413.7270, #1; register at any Boulder Rec Center, or through their website: <http://www.bouldercolorado.gov>, Departments, Parks & Recreation, Recreation Programs & Services. Course #: 117125.

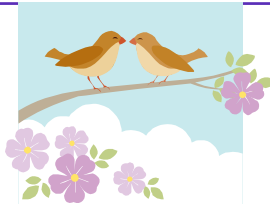


Game Night- If you are interested in hosting an evening, your choice of date and time call Jackie Massey 303.818.3622



Friday Afternoon Club:

Everyone is invited. Come socialize every Friday from 5PM to 7 or 8PM. We gather in the bar of the Boulder Outlook Inn, Frontage Road north of 28th and Baseline Road. Bargain price drinks, pizza, etc. **See you there!**



Upcoming Spring Events:

Now– May 30, 2010 Navajo Weaving: Landscapes. This is the third of three exhibits at the CU Museum showcasing 20-30 Navajo textiles from the Museum's Joe Ben Wheat Southwestern Textile Collection, which is

considered to be one of the best collections of Navajo textiles in the world. **Free.**

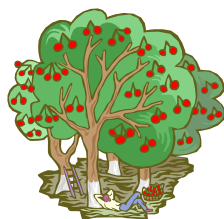
May 13, 2010 (Thursday) - University of Colorado Greenhouse Tour, 1:00 PM. **Free.** Contact the CU Museum for information and to sign up.

May 18 (Tuesday) and May 19, 2010 (Wednesday) – University of Colorado Annual Spring Tree Walk. 5:00 PM **Free.** Both days are the same content. Meet at south entrance to CU Museum. No sign up required.

New Announcement!

May 12 (Wednesday) Geology for the Average Bear

If you think geology is fascinating but too technical, this is the program for you. Boulder's rocks tell wild stories that include dinosaurs, glaciers, vast swamps, oceans and ancient mountain ranges now vanished into the dust of time. Join naturalist Dave Sutherland of OSMP for an easy hike and a journey into Boulder's past. Meet at NCAR parking lot at 9:30 AM. 2 miles, 300 feet elevation gain. This exclusive hike and talk for FSC will last from 9:30 until Noon. Optional lunch gathering afterward. Call Linda Paris with questions.



Save the Date:

Apple Festival and Fall Colors – Avalanche Ranch October 1-3, 2010

Back by popular demand! Reservations have been made the first weekend of October at Avalanche Ranch near Carbondale for the Apple Festival and the fall colors. Accommodations have been reserved for 13 people (including 3-4 couples) in the Ranch House and Cabins 9 and 10 for the nights of October 1 and 2. Leave Boulder Friday, return Sunday. The trip will include a barbecue with music, sponsored and prepared by the Ranch staff on Saturday afternoon. Participants will provide a potluck dish for the barbecue. Be aware that bears will be in the Ranch fruit grove and near cabins at night because of the mature apples available for food. Deposits for the trip are being accepted now. Trip cost \$130.00. Balance of payment in full will be due in July. Call Linda and Chris Paris with questions.

Bridge Night - *If you are interested in hosting an evening of Bridge on a second or fourth Thursday, please call Jan Effenberger 303.499.8432 We need some more volunteers! Thanks!*

2010 Summer Activities

Canyonlands Memorial Weekend May 28-31 (Friday-Monday)

The FSC has once again rented 2 houses in Moab, UT for \$60 per person. There will be hikes and bike rides in this beautiful area of the US. The trip is full with a waiting list. The balance of \$35 is due by the April 1st FSC meeting.



Canoe Dominguez Canyon on the Gunnison River June 18-20 (Friday-Sunday)

Borrow, rent or use your own canoe. Drive to Grand Junction Friday evening. Stay in a motel or camp in the area. Shuttle cars and launch canoes Saturday morning. Participants must be **intermediate** canoe paddlers. The group will camp along river at Dominguez Creek and hike to Indian art. Group will canoe to Whitewater, CO on Sunday. Load cars and drive back to Boulder.

Weekend Campout and Adventure July 31-August 1 (Saturday-Sunday)

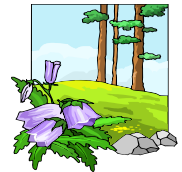
Drive to Trappers Lake Saturday morning via Toponas, CO. Campground is adjacent to the Flattops Wilderness and is in one of the most beautiful locations in Colorado. Saturday afternoon hike to the top of the Flattops and back. Sunday morning break camp and drive to south of Buford, CO. Explore Spring Cave. Saturday afternoon return to Boulder via Meeker and Rifle, CO.

10th Mt. Div. Hut August 24-26 (Tuesday-Thursday)

The FSC has reserved Uncle Bud's Hut above Turquoise Lake near Leadville. Carpool to trailhead and hike 3 miles to cabin. Sleeping bags and gear carried by 4WD. Breakfast and dinners provided. Bring 2 hike lunches. Cost \$100. Deposit \$25. Balance due by July 4th. The trip is now full, but additional members for the waiting list will be accepted.

Call Stewart Woodward 303-665-9438 for info about all of the above outings.

Summer 2010 – July 12-15, Wildflower Festival, Crested Butte



The waiting list for the Wildflower Festival trip remains open. The trip is filled at this time. Please contact Linda Paris with questions or to join the waiting list.

This trip will depart on Monday, July 12 and return Thursday, July 15. Overnight accommodations are booked for the nights of July 12, 13 and 14 at the Christiana Guesthaus, and will include 3 breakfasts.

The festival schedule will be coming out this month. Festival registration will begin when the schedule is published (first come, first served). Registration and payment for festival activities will be up to individual participants directly with the Wildflower Festival office. Mail/e-mail registration will extend until about 2 weeks before the start of the festival. Participation in festival events is not required. We will be planning our own hikes/activities as an alternative to the pricey events.

An e-mail from Linda and Chris Paris with initial details about the trip will be sent to paid participants this month (April).

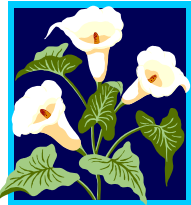
ECUADOR AND THE GALAPAGOS –

June 15-24, 2010 - Join us “in the footsteps of Darwin” on a 4 night, 5 day tour of the Galapagos and 3 days exploring a cloud forest and Quito and its environs. \$2600, plus rt air to Quito and rt Quito to the Galapagos. Extension to the AMAZON BASIN available June 24-29. Experience the fauna/flora/culture along the Rio Napo. \$975, includes air rt from Quito to the Amazon Basin. Stan or Lois Kruschwitz, ph. 303-444-2555, c. 303-817-8184, eco@earthnet.net

**A
P
R
I
L

M
A
Y**

| SUNDAY | MONDAY | TUESDAY | WEDNESDAY | THURSDAY | FRIDAY | SATURDAY |
|------------------|--------|----------------------|-----------|--|--------|------------------------------|
| 28 Telluride Ski | 29 | 30 | 31 | 1 Mid week ski General Meeting | 2 FAC | 3 |
| 4 | 5 | 6 | 7 | 8 Mid week ski Bridge @ Jan's | 9 FAC | 10 |
| 11 | 12 | 13 Book Club @ Jan's | 14 | 15 Mid week ski Board Meeting @ Jan's | 16 FAC | 17 |
| 18 | 19 | 20 | 21 | 22 Bridge @ Laurance's | 23 FAC | 24 Game Night @ Muriel |
| 25 | 26 | 27 | 28 | 29 | 30 FAC | 1 |
| 2 | 3 | 4 | 5 | 6 | 7 FAC | 8 Wilderness First Aid Class |



Flatirons Ski Club

An Outdoor Multi Sports & Social Group
 PO Box 6120
 Boulder, CO 80306