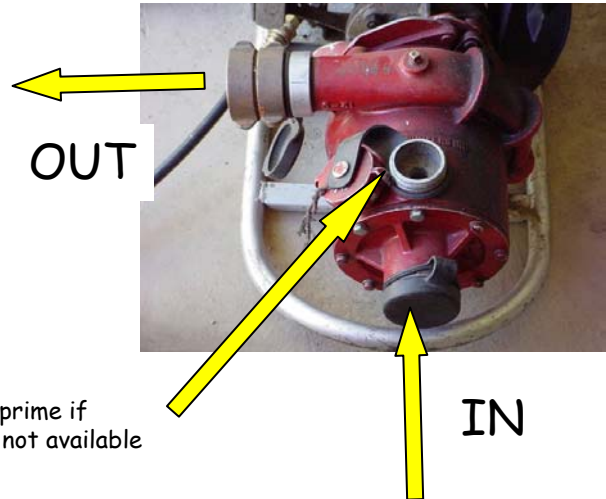


Mark III Startup

1. Fill draft line by jiggling foot valve underwater, attach to pump (tight!)



Pour here to prime if hand pump is not available

2. Finish priming with hand pump

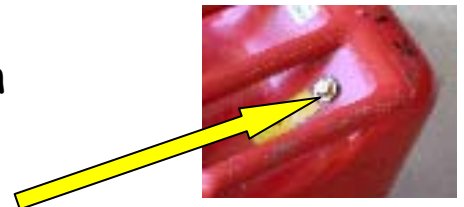
3. Connect outlet hose to pump. Gated Y for bypass/recirc is a good idea

4. Check gas label, mix 2-stroke oil into gas for 32:1

(4oz/1gal. Gasoline is usually stored plain, without oil premixed.) Relabel mix.



5. Open vent on fuel can

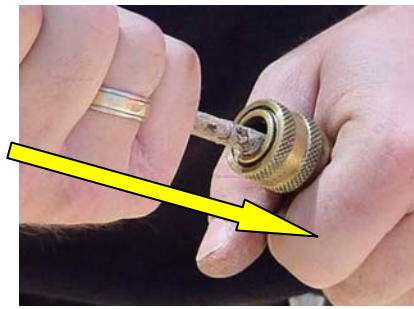


6. Attach fuel line to fuel can

Shove straight in. To remove, pull straight out with twist



7. Free in-line fuel valve by pushing with a stick



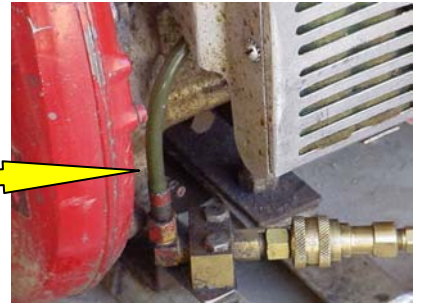
8. Check for fuel flow while holding valve open with stick. Squeeze in-line primer pump bulb. No fuel is #1 problem cause.



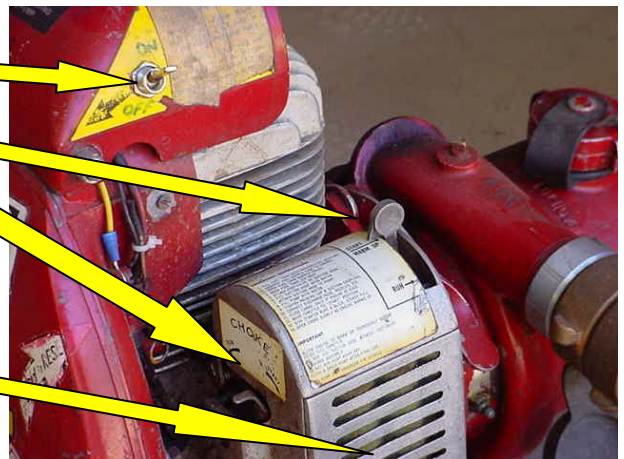
9. Attach fuel line to pump. Push on hard. Test by tugging. (Remove by pulling back spring-loaded outer ring)



10. Squeeze fuel line bulb. Observe gas being forced up sight tube, then STOP squeezing



- 11. Turn ign on
 - 12. Set throttle to start
 - 13. Set choke to start
 - 14. Get somebody strong to pull.
- A short blast of starter fluid will help



Set controls to 'run' when warm

To shut down long term, pull fuel line from fuel can, run dry. Short term: switch off, throttle off.